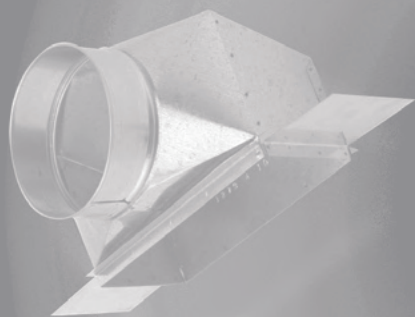


P R O D U C T

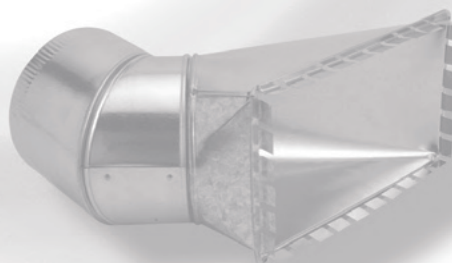
C A T A L O G

CELEBRATING OVER 100 YEARS  
OF QUALITY HVAC SHEET METAL



*Seal-Tite*®  
DUCT, PIPE & FITTINGS

*America's Premier  
Air Distribution  
Systems*



HEATING, AIRCONDITIONING & REFRIGERATION DISTRIBUTORS INTERNATIONAL



# INDEX

<b>Tapered Round Pipe</b> ..... 4	<b>Air Filter Frames</b> ..... 9	<b>Oval Elbows/Angles</b>	No. 1726 – 6" Long Top Collar w/Tabs..... 17
24", 5' & 10' Sections..... 4	<i>Filter Frames</i>	No. 4130 – Horizontal Oval Elbow .. 14	No. 1732 – Damper Collar w/Scoop 17
No. 186 – 6" Pipe Hanger..... 4	No. 250 – Filter Frame w/o Dovetail .. 9	No. 4131 – Horizontal Oval Angle .. 14	<b>Miscellaneous Accessories</b>
15 1/4" & 19" Joist Bar..... 4	No. 251 – Filter Frame w/Dovetail – One Side..... 9	No. 4140 – Vertical Oval Elbow .... 14	No. 171 – Stub Collar..... 17
<b>"Ball-Bearing" Elbows &amp; Angles</b> ..... 4	No. 252 – Filter Frame w/Dovetail – Both Sides..... 9	No. 4141 – Vertical Oval Angle..... 14	No. 172 – Top Collar..... 17
Adjustable Elbow Four-Piece, 90°... 4	No. 254 – Premium Filter Frame..... 9	<b>Oval Boots</b>	No. 151 – Boot Cap w/Crimp..... 17
Adjustable Angle, Two-Piece, 45°... 4	No. 253 – Screw-In Style Filter Frame 9	No. 4244 – Round-to-Oval Boot..... 14	No. 152 – Boot Cap/No Crimp..... 17
<b>Take-Off Fittings</b> ..... 5	No. 249 – Filter Frame (Premium Slide-In)..... 9	No. 4244NC – Round-to-Oval Boot/No Crimp..... 14	No. 180-1 – Round Volume..... 17
No. 1264 – Universal Take-Off..... 5	<b>Plenum Chambers</b> ..... 10	No. 4246 – Oval Reverse Boot..... 14	No. 180 – Round Volume..... 17
No. V1264 – Stick-On Universal Take-Off..... 5	No. 80 – Down-Flow Plenum..... 10	No. 4246NC – Oval Reverse Boot/No Crimp..... 14	No. 173 – Damper Collar..... 17
No. 1261 – Top Take-Off..... 5	No. 81 – Plenum..... 10	No. 4247 – Round-to-Oval Straight Boot..... 14	No. 175 – Damper Section..... 17
No. 1262 – Top Take-Off..... 5	No. 82 – Plenum..... 10	No. 4247NC – Round-to-Oval Straight Boot/No Crimp..... 14	No. 220 – Flue Thimble..... 17
No. 1268 – High Performance 26 GA, Top Take-Off..... 5	No. 94 – Plenum..... 10	No. 4248 – Round-to-Oval Adapter..... 14	No. 2223 – Fresh Air Intake..... 17
No. 1265-S – Take-Off Collar..... 5	No. 212 – Plenum Corners..... 10	No. 4248NC – Round-to-Oval Straight Boot/No Crimp..... 14	No. 154 – Shanty Cap..... 17
<b>Round Take-Offs</b>	<b>Return Air Products</b> ..... 10	<b>Duct Board Fittings</b> ..... 15	No. 184 – Vent Cap w/Wind Band .. 17
No. 1260-S – Take-Off Adjustable .. 5	No. 148 – Return Air Connector w/o Dovetail..... 10	<i>Take-Offs &amp; Collars</i>	No. 222 – Storm Collar..... 17
No. 1460-S – Take-Off 1/2 Tab..... 5	No. 248 – Return Air Connector w/Dovetail..... 10	No. 1660-S – Duct Board Cone..... 15	<b>Round Pipe Accessories</b> ..... 18-19
No. 1160-S – Take-Off Includes Damper..... 5	No. 81100 – Return Air Package .. 10	No. 1760-S – Duct Board Cone..... 15	No. 145 – Adjustable Perimeter Wye18
No. 1266 – Take-Off New Style..... 5	No. 92 – Low Profile Furnace..... 10	No. 1560-S – Duct Board Cone..... 15	No. 146 – Wye Branch..... 18
<b>Register Boots</b> ..... 6	<b>Wall Stack</b> ..... 11	No. 696 – 90° Duct Board Boot w/Straight Collar..... 15	No. 324 – Flue Wye..... 18
No. 1274 – 90° Angle Register Boot .. 6	12" & 24" Section	No. 697 – 45° Duct Board Boot w/Adjustable Collar..... 15	No. 224 – Wye Branch..... 18
No. 1270 – Straight Register Boot .. 6	Snap-Lock Wall Stack..... 11	No. 1727 – Duct Board Collar..... 15	No. 218 – Tee Joint..... 18
No. 1279 – Basement Register Boot .. 6	60" & 100" Sections Button-Lock & Sliding Edge Wall Stack..... 11	No. 1728 – Duct Board Collar w/Damper & Tabs..... 15	No. 219 – Tee Joint/No Crimp..... 18
No. 1273-L – Left End Register Boot .. 6	<b>Stack Angles &amp; Elbows</b> ..... 11	No. 1729 – Duct Board Collar w/Damper, Tabs & Scoop..... 15	No. 217 – Tee Joint/Crimp on the run18
No. 1273 – Center End Register Boot .. 6	No. 1240-S – Elbow..... 11	No. 800 – Flex Duct Conductor..... 15	No. 153 – Tee Joint Cap..... 18
No. 1273-R – Right End Register Boot .. 6	No. 1241-S – Angle..... 11	<b>Twist Type Take-Off Connectors for Duct Board</b> ..... 15	No. 123-H-V – Horizontal-Vertical .. 18
<b>New Construction Register Boots</b>	No. 1245-S – Angle..... 11	No. 1564 – Duct Board Seal-Tite Take-Off..... 15	No. 120 –Vertical..... 18
No. 1474 – Register Boot..... 6	No. 1246-S – Elbow..... 11	No. 502-WB-C2..... 15	No. 121 – Horizontal..... 18
No. 1374 – 90° Register Boot..... 6	No. 1259 – Left Reverse Elbow..... 11	No. 503-WB-C3..... 15	No. 1286 – Ceiling Diffuser..... 18
No. 1370 – Register Boot..... 6	No. 1253 – Center Reverse Elbow .. 11	No. 505-WB-EL..... 15	No. 84 – Rails 26" Long..... 18
No. 1373-C – Register Boot..... 6	No. 1258 – Right Reverse Elbow .. 11	No. 506-WB-D..... 15	No. 2172PG – Ceiling Register Box... 18
<b>Register Pans</b> ..... 6	No. 1200 – Take-Off Collar..... 11	No. 508-WB-DEL..... 15	No. 1075 – Ceiling Register Box .. 18
No. 1170 – Register Boot..... 6	No. 1250 – Stack Adapter..... 11	<b>Twist Type Take-Off Connectors for Sheet Metal</b> ..... 16	No. 1280 – Less Damper & Chain .. 19
No. 1171 – Register Pan (6")..... 6	No. 1210 – Wall Stack Cap..... 11	No. 176 – Take-Off Collars..... 16	No. 190 – Basement Diffuser Tee .. 19
No. 1172 – Register Pan (10")..... 6	<b>Stack Heads</b> ..... 12	No. 605-WG-EL..... 16	No. 191 – Diffuser Tee..... 19
No. 50 – Duct Register Box..... 6	No. 1230 – Stack Head..... 12	No. 604-WG-E..... 16	<b>G500 Series Seal-Flex Sleeve &amp; Accessories</b> ..... 19
<b>Rectangular Duct</b> ..... 7	No. 1232 – Stack Head..... 12	No. 606-WG-D..... 16	G500 Series Seal-Flex Sleeve..... 19
32", 48", 60" & 96" Sections w/Button-Lock Seams, "S" Hook & Drive Cleat Connection..... 7	No. 1234 – Stack Head..... 12	No. 607-WG-DE..... 16	<i>Accessories</i>
32" 48", 60" & 96" Sections w/Slide & Drive, "S" Hook & Drive Cleat Connection..... 7	No. 31 – Dry Wall Frame..... 12	No. 608-WG-DEL..... 16	No. 700 – Draw Band Type Clamp.. 19
<b>Joist Panning</b> ..... 7	No. 3516 & 3524 Boot Frames.....12	No. 601-WG-C1..... 16	No. 274 – Starter Cones..... 19
No. 207-17, 208-33 – Joist Panning .. 7	<b>Wall Stack Boots</b> ..... 12	No. 602-WG-C2..... 16	<b>Specialty Fittings</b> ..... 20
No. 182 – Volume Damper..... 7	No. 1214 – Universal Boot..... 12	No. 603-WG-C3..... 16	Dryer Boxes..... 20
No. 185 – Duct Hanger..... 7	No. 1218 – Elbow Boot..... 12	No. 179 – Stick-On Take-Off Collar w/Tabs..... 16	CRD Boots..... 20
<b>Rectangular Duct Fittings</b> ..... 8	No. 1219-L – Left End Boot..... 12	No. 181 – Stick-On Take-Off Collar w/Tabs & Damper..... 16	<b>Black Pipe &amp; Fittings</b> ..... 20
<i>Duct Elbows &amp; Angles</i>	No. 1219-R – Right End Boot..... 12	No. 302 – Stick-on w/Damper..... 16	<i>Stove Pipe Elbows &amp; Accessories</i>
No. 1240 – Elbow, Short Way..... 8	<b>Oval Pipe &amp; Fittings</b> ..... 13	No. 305 – Stick-on Saddle..... 16	24" Black Pipe..... 20
No. 1241 – Angle, Short Way..... 8	No. 4245 – Round-to-Oval Long Boot .. 13	<b>Round Pipe Accessories</b> ..... 17-19	Black Elbow..... 20
No. 1245 – Angle, Long Way..... 8	No. 4245NC – Round-to-Oval Long Boot/No Crimp..... 13	<i>Reducers/Increasers</i>	Taper Reducer..... 20
No. 1246 – Elbow, Long Way..... 8	No. 4113 – 113" Oval Pipe..... 13	No. 131 – Taper Increaser..... 17	Boot Cap..... 20
<i>Duct Reducers</i>	No. 4100 – 100" Oval Pipe..... 13	No. 132 – Taper Reducer..... 17	No. 4248 – Round-to-Oval Adapter .. 20
No. 1251 – Reducer, 16" Long (Tapered One Side)..... 8	No. 4060 – 60" Oval Pipe..... 13	No. 231 – Short Increaser..... 17	Telescopic Pipe..... 20
No. V1251 – Reducer, 8" Long (4" + 2" Reduction)..... 8	<b>Adapters</b> ..... 13	No. 232 – Short Reducer..... 17	Tee Joint..... 20
<i>Duct Adapter</i>	No. 4212 – Oval Boot Adapter..... 13	No. 233 – No-Crimp..... 17	Trim Collar..... 20
No. 187 – Duct Adapter..... 8	No. 4213 – Round-to-Oval Adapter .. 13	<b>Connectors Draw Bands</b>	<b>Skid Sheet Steel and Heat Transfer Plates</b> ..... 21
No. V187 – Duct Adapter..... 8	<b>Oval Fittings</b> ..... 14	No. 162 – Snap Type Pipe Connector17	No. XXX..... 21
<b>Insulated Duct, &amp; Fittings</b> ..... 8	<i>Oval Top &amp; Side Take-Offs</i>	No. 162 HC – Hose Clamp Connector17	No. XXX..... 21
No. 215 – Rigid "S" Strip..... 8	No. 4261 – Oval Top Take-Off..... 14	No. 167 – Draw Bands Bolt Type... 17	<b>Mobile &amp; Modular Home Applications</b> 21
No. 209 – Favor-Lox "S" Hook..... 8	No. 4265 – Oval Side Take-Off..... 14	<i>Collars</i>	No. 146 – WYE..... 21
No. 213 – Drive Cleat..... 8	<i>Oval Stackheads &amp; Register Boxes</i>	No. 1724 – 4" Long Top Collar..... 17	No. 201 – Duct Tap-In Fitting..... 21
<b>Rectangular Duct Fittings</b> ..... 9	No. 4238 – Oval Stackhead..... 14	<b>Extended Plenum System</b> ..... 22	w/Damper..... 21
No. 1203L – Transition Take-Off..... 9	No. 4270 – Angle Oval Register Box 14	<b>Reduction System</b> ..... 23	No. 200 – Filter Register Box..... 21
No. 1203 – Transition Take-Off..... 9	No. 4271 – Oval Register Box..... 14	<b>Table of Weights &amp; Gauges</b> ..... 24	
No. 1230R – Transition Take-Off..... 9	<i>Oval Register Boots</i>	<b>Heating Values of Fuels</b> ..... 24	
No. 1210 – Duct Head..... 9	No. 4272 – Straight Oval Register Boot..... 14	<b>Fractions &amp; Decimal Equivalents</b> ..... 24	
No. 1200 – Take-Off Collar..... 9	No. 4273 – End Oval Register Boot .. 14		
No. 1202 – Take-Off Collar..... 9	No. 4274 – 90° Oval Register Boot .. 14		

SealTite®

CELEBRATING OVER 119 YEARS OF QUALITY HVAC SHEET METAL



## FOR OVER 119 YEARS...PREMIUM QUALITY DUCT, PIPE & FITTINGS

In the Spring of 1900, the Peck-Williamson Heating Co. commissioned its sheet metal shop in downtown Cincinnati and Seal-Tite® was born.

For over 119 years the finest HVAC technicians and craftsmen have insisted on installing Seal-Tite®, prefabricated galvanized duct, pipe & fittings. These contractors, their wholesalers, and our employees have contributed greatly to the growth and success of Seal-Tite®. As we enter the new millennium and celebrate our centennial we want to thank you and invite you to continue to share in our partnership and success in the future.

For 119 years, Seal-Tite® has delivered value to our wholesalers, dealers/installers, home-builders, and homeowners by following basic but strong principals. These same principals guide us toward our future:

**Principal 1:** Our customers come first and we want our partnership to grow.

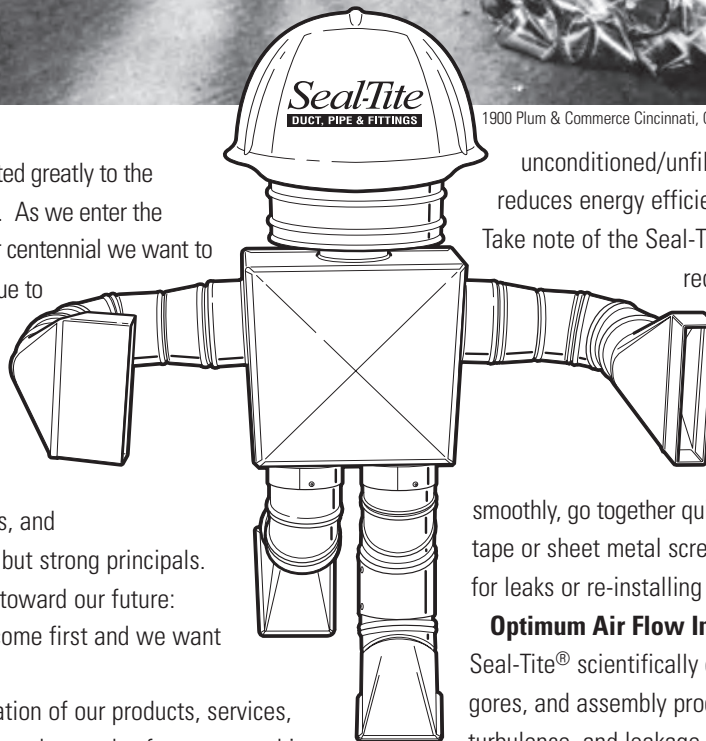
**Principal 2:** Constant re-creation of our products, services, programs and deliverables to meet the needs of our partnership guarantee success.

**Principal 3:** Continuous improvement through automation and cost-effective processes, while preserving our time tested design features and benefits will assure our future.

**Principal 4:** The Seal-Tite® product does make a difference and that is why we have resisted cheapening our standard product. We are America's Premier Air Distribution System.



1900 Plum & Commerce Cincinnati, Ohio



Seal-Tite® products will always be designed and manufactured for the *energy efficient* distribution of conditioned air while maximizing *indoor air quality* and *comfort*. Our product design adheres to three basic beliefs:

### **Leakage is bad.**

Whether conditioned air escapes the air distribution system or unconditioned/unfiltered air is drawn in, leakage reduces energy efficiency and indoor air quality.

Take note of the Seal-Tite® design features that reduce or eliminate leakage.

### **Installation Time Does Matter**

Seal-Tite® products are designed with the installer in mind. Products adjust

smoothly, go together quickly and stay together without tape or sheet metal screws. No time is wasted looking for leaks or re-installing fittings that have come apart.

### **Optimum Air Flow Improves Comfort**

Seal-Tite® scientifically designed collars, throat radii, gores, and assembly procedures reduce friction, turbulence, and leakage delivering optimum air flow to the Comfort Zone. 16.8% more air with 14.8% less energy does make a difference.

We invite you to review our catalog, take note of our products, their features and their benefits to you and discuss with us our partnership for the 21st century.

*Seal-Tite®*

Seal-Tite  
DUCT, PIPE & FITTINGS



## EASY INSTALLATION

Time is money! On the job tests show Seal-Tite saves time. No lost time wrestling with poorly constructed fittings that won't adjust or stay together. Hand hammered seams, safety edges and internally rolled gores improve safety. Each Seal-Tite fitting mates up perfectly without sheet metal screws or tape. The Seal-Tite certified installer is finished with the job quickly. If it fits right, looks right, stays right and is leak-tite – it's Seal-Tite.



## ENERGY EFFICIENCY

Scientifically designed and handcrafted to reduce turbulence and friction, maximize air flow and eliminate leakage. Seal-Tite air distribution system delivers 16.8% more air volume and requires 14.8% less energy. Why install an energy efficient heating/cooling unit and lose efficiency in air distribution?



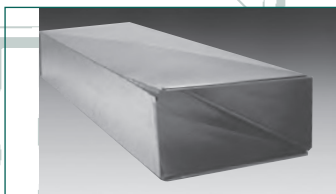
## INDOOR AIR QUALITY

Seal-Tite fittings are constructed of prime grade galvanized metal to prohibit rusting and peeling and are designed to be leak-tite. Consequently, unfiltered air doesn't get in and cold or hot air doesn't get out, and unlike fabric or fibrous duct systems, won't produce dust particles or breakdown over time.



## QUIET OPERATION

Full gauge metal eliminates "oil canning" noises and leak-tite construction eliminates whisper and whistling. Reduced turbulence and resistance also reduces noise throughout the air distribution system.



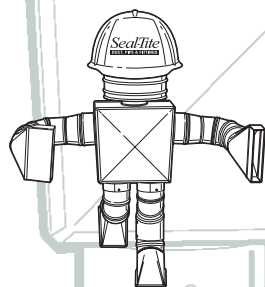
## DURABLE CONSTRUCTION WITH EYE APPEAL

Seal-Tite rigid construction, full gauge metal, double lapped, hand hammered seams, streamline modern design and bright galvanized finish provides a clean, modern, finished look. Designed in accordance with A.C.C.A. Can be ordered to SMACNA specifications as well.



## STOCKED LOCALLY & EASY HANDLING

Seal-Tite full-line products are stocked locally by our extensive wholesaler network. Get everything you need from one source of supply. Product is delivered bar-coded, color-coded, cartoned, skidded or racked for ease of handling and minimum space requirements.





# A D I F F E R E N C E !

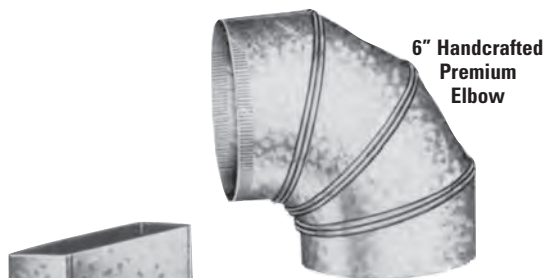
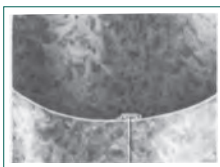
HAVE INSISTED ON SEAL-TITE PRODUCTS BECAUSE OF THEIR DESIGN FEATURES AND THEIR BENEFITS



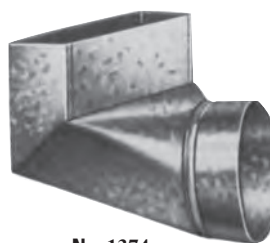
Seal-Tite® Snap-Lock Pipe



Seal-Tite® "Premium" pipe has a fine crimp, tapered end, and a 2" bearing space which provides a quick, snap-together leak-tite fit without screws or tape saving time, money and energy.



6" Handcrafted Premium Elbow

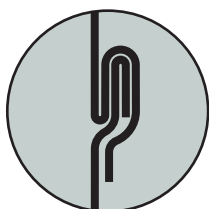


No. 1374  
90° Register Boot  
Hemmed Collar  
for Safety

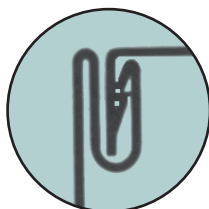


No. V1264  
Adjustable Take-Off

Seal-Tite® duct, pipe and fittings use seaming and joining technology that is easy to install and take apart, yet stays together snugly producing a leak-tite, durable seam. The Seal-Tite® quality is your guarantee that it will fit right, look right, stay right and be leak-tite.



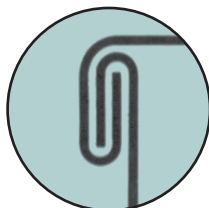
Snap-Lock



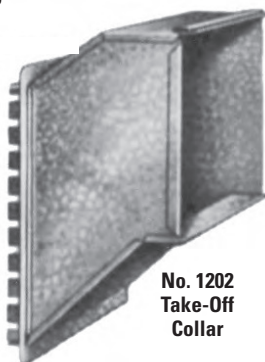
Button-Lock



Sliding Edge



Double Lapped Hand  
Hammered Construction



No. 1202  
Take-Off  
Collar

Seal-Tite elbows, take-offs, boots and fittings are designed and handcrafted for maximum air flow, minimum air loss and ease of installation. Our adjustable "ball bearing elbow" design provides smooth adjustability and a leak-tite stay together fit. The Seal-Tite exclusive design on elbows, take-off and boot collars reduces turbulence and resistance because air flows over (instead of against) the edges of the interior ridges and eliminates leak path. In addition, their full radius throats maximize air flow. Hemmed collars on boots provide for a perfect, sturdy fit-up.



Other  
manufacturers  
corners.



Seal-Tite's fully closed corner. Eliminates leakage.

## ELIMINATE LEAKS

Our handcrafted fittings have solid, fully closed corners which eliminate leak paths, reduce energy loss, and keep unfiltered unconditioned air from entering the conditioned air distribution system. In addition, our unique handcrafted double lapped, hand-hammered seaming technique provides rigid and leak-tite installation.

Seal-Tite®

## TAPERED ROUND PIPE

24", 5' & 10'  
SECTIONS



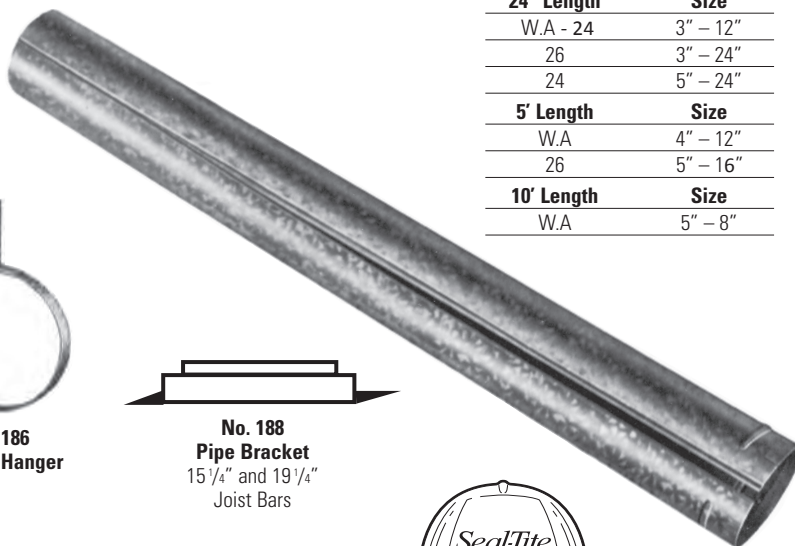
Seal-Tite® Snap-Lock Pipe



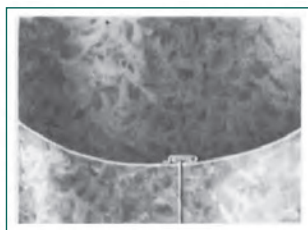
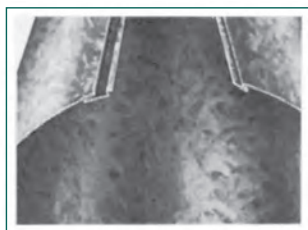
No. 186  
6" Pipe Hanger



No. 188  
Pipe Bracket  
15 1/4" and 19 1/4"  
Joist Bars



24" Length	Size
W.A - 24	3" - 12"
26	3" - 24"
24	5" - 24"
5' Length	Size
W.A	4" - 12"
26	5" - 16"
10' Length	Size
W.A	5" - 8"



- No seaming required – "Hidden Lock" feature. Seal-Tite fit.
- Eliminates sheet metal screws and taping.
- Tapered end with fine crimp and 2" bearing space assures easy, secure fit with another section of pipe, elbow, or take-off in boot.
- One man installation saves time and money.

## HAND CRAFTED "BALL-BEARING" ELBOWS & ANGLES



Adjustable Elbow  
Four-Piece, 90°

Gauge	Size
W.A	3" - 12"
26	3" - 18"
24	5" - 36"



Adjustable Angle  
Two-Piece, 45°

Gauge	Size
W.A	4" - 12"
26	3" - 18"
24	5" - 24"

### ELBOWS & ANGLES

Minimum turbulence and friction because air flows over (instead of against) edges of interior ridges. Our hand crafted "Ball Bearing" gores are easy to adjust, leak-tite, and guaranteed not to fall apart.

**\*They adjust and will not fall apart  
or replacement is guaranteed  
by Seal-Tite.**

See page 20:  
Black Stove Pipe & Fitting

SealTite®

CELEBRATING OVER 119 YEARS OF QUALITY HVAC SHEET METAL

## TAKE-OFF FITTINGS

#V1264

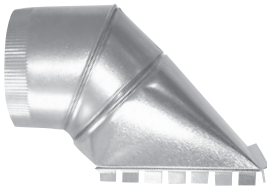
### HIGH PERFORMANCE UNIVERSAL TAKE-OFF



No. 1264  
Take-Off Adjusted for  
Top Installation

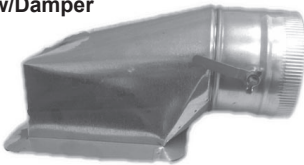


No. 596  
Top Take-Off



No. V1264  
Universal Take-Off  
V1264SO (Stick-On Style)

Stick-On  
No. 1288 & 1288D  
w/Damper



No. 1262  
Top Take-Off

No. 1268D

### HIGH-EFFICIENCY TAKE-OFF

4" - 20"

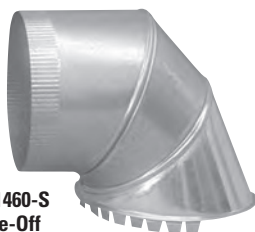


No. 1268D  
Take-Off

### ROUND TAKE-OFFS



No. 1260-S  
Take-Off  
Adjustable  
Cone



No. 1460-S  
Take-Off  
Cone  
1/2 Tab Cone



No. 1160-S  
Take-Off Cone  
Includes Damper

**Seal-Tite 1264 Universal Take-Off provides proper air requirements to the branch.**

1. Full 90° adjustment with ease.
2. Designed for most efficient air flow, up to 3 times more efficient.
3. Full 3/8" collar around connection to duct, for your assurance of a Seal-Tite fit. Solid corner construction.
4. Notched 5/8" dovetail for faster and easier installation, yet sturdy construction.
6. Seal-Tite No. 1264 take-off saves time, energy and maximizes comfort.

Round Pipe Size	Installed Height from Duct	Take-Off Size	AVAILABILITY			
			1261	1262	1264	V1264
4"	2"	4 1/2" x 6"	✓		✓	
4"		6" x 7"				✓
5"	2"	4 1/2" x 9"	✓	✓	✓	
5"		6" x 7"				✓
6"	1 7/8"	6" x 10"	✓	✓	✓	
6"	1 7/8"	6" x 8"			✓	
6"	1 7/8"	6 1/2" x 6 1/2"			✓	
6"	No Rise	6" x 10"	✓	✓		
6"		6" x 7"				✓
7"	1 7/8"	6" x 12"	✓	✓	✓	
7"		7" x 8"				✓
8"	5/8"	6" x 14"	✓	✓	✓	
8"		8" x 9"				✓
9"	5/8"	6" x 16"			✓	
10"	5/8"	7" x 16"			✓	
12"	5/8"	7" x 20"			✓	

Round Pipe Size	1265	
	Take-Off Size	
4"	5" x 5"	
5"	5" x 5"	
6"	6" x 6"	
7"	7" x 7"	
8"	7" x 8"	
9"	7" x 10"	
10"	10" x 10"	
12"	12" x 12"	



No. 1265  
Take-Off Collar

Size	AVAILABILITY			
	1260-S	1460-S	1160-S	1266
5" - 4"	✓	✓		✓
6" - 5"	✓	✓		✓
7" - 6"	✓	✓	✓	✓
8" - 7"	✓	✓		✓
9" - 8"	✓	✓		✓

No. 1266  
Take-Off New Style  
Cone

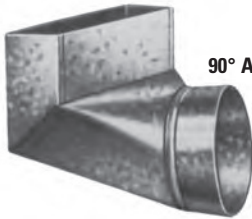


*Seal-Tite®*

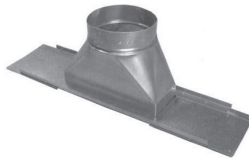


## REGISTER BOOTS

### HANDCRAFTED PREMIUM BOOTS



**No. 1274**  
**90° Angle Register Boot**  
3 1/8" Extension



**No. 1278**  
**STR. Basement**  
**Register Boot**



**No. 1279**  
**90° Basement**  
**Register Boot**



**No. 3516**  
**Boot Frame**  
16" On Center

**No. 3524**  
**Boot Frame**  
24" On Center



**No. 1270**  
**Straight Register**  
**Boot**



**No. 1273-L**  
**Left End**  
**Register Boot**



**No. 1273**  
**Center End**  
**Register Boot**



**No. 1273-R**  
**Right End**  
**Register Boot**

		AVAILABILITY		
Register Size	Collar Size	1274, 1374, 1370, 1373 1270 & 1273	1279	1474
2 1/4" x 10"	4", 5" & 6"	✓		
4" x 10"	4", 5" & 6"	✓	✓	
4" x 12"	4", 5" & 6"	✓	✓	
4" x 14"	5" & 6"	✓		
2 1/4" x 12"	5" & 6"	✓		
2 1/4" x 14"	5" & 6"	✓		
4" x 12"	7" & 8"	✓		
4" x 14"	7" & 8"	✓		
2 1/4" x 12"	7" & 8"	✓		
2 1/4" x 14"	7" & 8"	✓		
6" x 10"	6"	✓	✓	
6" x 12"	6", 7" & 8"	✓	✓	
6" x 14"	8"	✓	✓	
4" x 10"	7"	✓		✓
4" x 12"	7"			✓
6" x 14"	8"	✓		

### NEW CONSTRUCTION REGISTER BOOTS



**No. 1474**  
**Register Boot**  
4" Extension for CRD Dampers



**No. 1374**  
**90° Register Boot**  
2" Extension



**No. 1370**  
**Register Boot**



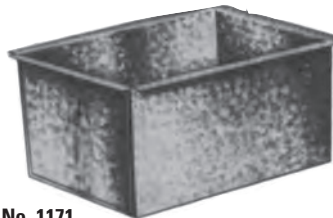
**No. 1373**  
**Register Boot**  
1373L- Left  
1373R-Right

## REGISTER PANS

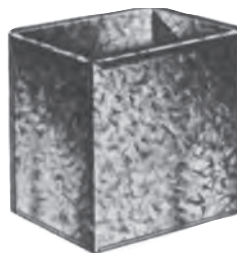


**No. 1170**  
**Register Pan**  
10" Deep

Register Size	Collar Size
8" x 10"	8"
8" x 12"	8"
9" x 12"	9"
10" x 12"	10"
10" x 14"	10"
12" x 14"	12"
14" x 16"	14"



**No. 1171**  
**Register Pan**  
6" Deep



**1171 & 1172**  
**Register**  
**Size**

8" x 10"  
8" x 12"  
9" x 12"  
10" x 12"  
10" x 14"  
12" x 14"  
14" x 16"

**No. 1172**  
**Register Pan**  
10" Deep



**No. 50**  
**Duct Register**  
**Box**

50 Register Size
4" x 10"
6" x 10"
4" x 12"
6" x 12"
4" x 14"
6" x 14"

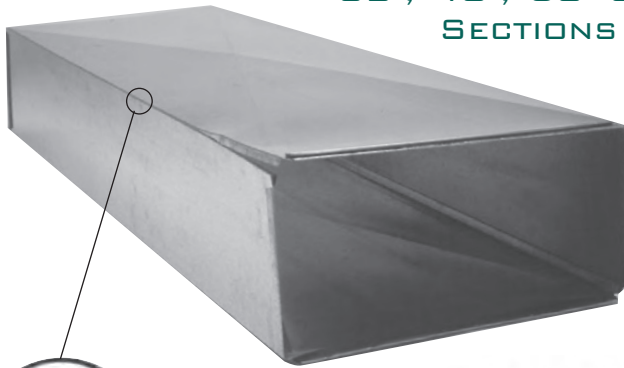
*SealTite®*

CELEBRATING OVER 119 YEARS OF QUALITY HVAC SHEET METAL



## RECTANGULAR DUCT

32", 48", 60" & 96"  
SECTIONS



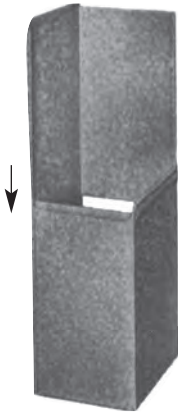
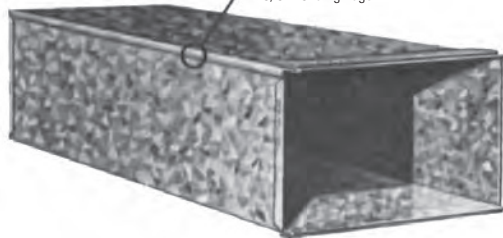
B/L – Button-Lock

With Button-Lock Seams,  
"S" Hook & Drive Cleat  
Connection All Included  
32", 48", 60" & 96" Sections



S/O – Sliding Edge

With Slide & Drive Seams,  
"S" Hook & Drive  
Cleat Connection All Included  
32", 48", 60"  
& 96" Sections



### SLIDE & DRIVE

Quickly and simply assembled on  
the job by inserting the seams on  
opposite edges and easily sliding  
the two pieces together and  
assemble with drive cleat.

Standard 26 gauge Available in 2 styles:

- S/D = Slide & Drive (Sliding Edge w/Drive Cleat)
- B/L = Button-Lock (Snap-Lock)

Sections sold complete w/"S" Hook and Drive Cleat.

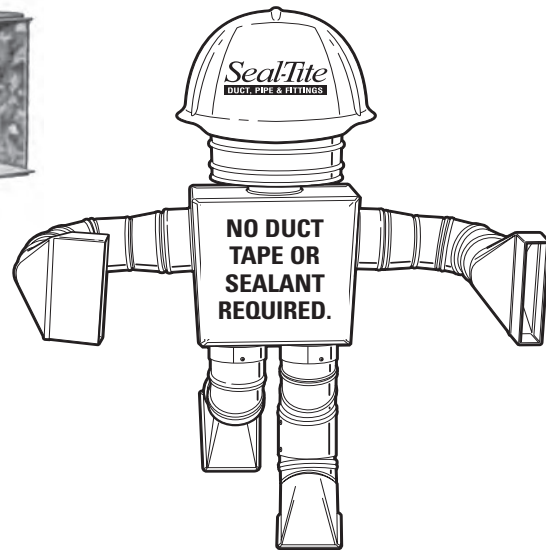
32", 48", 60" & 96"

Size

8" x 8"
10" x 8"
12" x 8"
14" x 8"
16" x 8"
18" x 8"
20" x 8"
22" x 8"
24" x 8"
26" x 8"
28" x 8"
30" x 8"
32" x 8"
34" x 8"
36" x 8"

(Specify Type Connection)  
Sold two pieces per section.  
Sold in carton, skid and rack quantities.  
Available in Insulated and in Special Sizes &  
Gauges – See Price List.

10" & 12"  
DEPTH DUCT  
AS WELL AS  
OTHER SIZES  
& GAUGES



## JOIST PANNING



No. 207-17  
Joist Planning

207-17

35<sup>3</sup>/<sub>8</sub> x 16<sup>1</sup>/<sub>2</sub>

Single Joist on 16" Centers

207-19

35<sup>3</sup>/<sub>8</sub> x 19

207-24

35<sup>3</sup>/<sub>8</sub> x 24

208-33

35<sup>3</sup>/<sub>8</sub> x 33

Double Joist

Packed in cartons for convenient handling.  
Available in W.A. and 26 gauge.

For other sizes contact factory.

No. 182  
Volume Damper



No. 185  
Duct Hanger  
Packed per carton

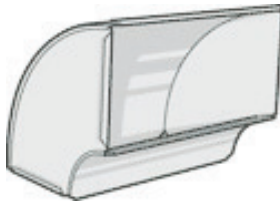
185-6  
1 7/8" x 7/8"

Seal-Tite®

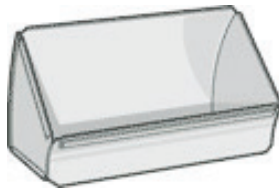
CELEBRATING OVER 119 YEARS OF QUALITY HVAC SHEET METAL

## RECTANGULAR DUCT FITTINGS

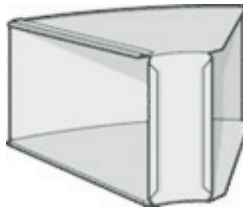
### DOUBLE LAPPED HAND HAMMERED SEAM CONSTRUCTION



**No. 1240**  
Elbow – Short Way



**No. 1241**  
Angle – Short Way



**No. 1245**  
Angle – Long Way



**No. 1246**  
Elbow – Long Way

### DUCT ELBOWS & ANGLES

with 4" radius throats

#### Note:

Also available in 10" & 12" Depths  
And Square Throat Style

#### 1240, 1241, 1245, & 1246 Size

8" x 8"
10" x 8"
12" x 8"
14" x 8"
16" x 8"
18" x 8"
20" x 8"
22" x 8"
24" x 8"
26" x 8"
28" x 8"
30" x 8"
32" x 8"
34" x 8"
36" x 8"

Available in Insulated and in  
Special Sizes & Gauges –  
See Price List.

### DUCT REDUCERS

4" Reduction

2" Reduction available in V1251

#### 1251 & V1251 Size

12" x 8" to 8" x 8"
16" x 8" to 12" x 8"
18" x 8" to 14" x 8"
20" x 8" to 16" x 8"
24" x 8" to 20" x 8"



**No. 1251**  
Reducer – 16" Long  
(Tapered One Side)



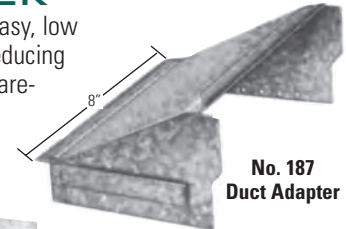
**No. 1251C**  
Reducer - 12" Long

Available in Insulated and in Special Sizes & Gauges – See Price List.  
S Connectors and Drive Cleats supplied with each Duct Fitting.

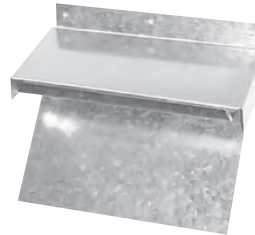
### DUCT ADAPTER

Provides a fast, easy, low  
cost method of reducing  
duct. Saves on ware-  
house space.

Available in Insulated and  
in Special Sizes & Gauges –  
See Price List.



**No. 187**  
Duct Adapter



**No. V187**  
Duct Adapter

#### 187 & V187 Size

2" x 8"
4" x 8"
6" x 8"
8" x 8"
10" x 8"

## INSULATED DUCT & FITTINGS



**No. 215**  
Rigid "S" Strip  
1" x 1/2"

Designed and recommended for  
use on duct wider than 22".



**No. 209**  
"S" Hook  
36", 48", 60", 96", & 120"

Available in  
W.A. - 26ga

### INTERNAL INSULATION

Seal-Tite duct fittings and take-offs are  
available with 1/2" internal insulation for quiet,  
thermally efficient heating and cooling air  
distribution systems.

Non-combustible insulation is protected by  
Super-Fine Ultralite finish and is U.L. listed.  
Density 2 lbs./cu. ft. K factor .24. Sizes and  
prices available through factory.



**No. 213**  
Drive Cleat

Drive cleats are furnished in  
standard lengths of 6" - 120"

*SealTite®*

CELEBRATING OVER 119 YEARS OF QUALITY HVAC SHEET METAL

## RECTANGULAR DUCT FITTINGS

USED WHEN DUCT IS WIDER THAN PLENUM.



**No. 1203L**  
**Transition Take-Off**  
2" Rise



**No. 1203**  
**Transition Take-Off**  
2" Rise



**No. 1203R**  
**Transition Take-Off**  
2" Rise

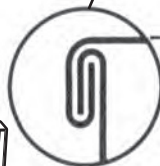
1203L, 1203 & 1203R	
Plenum Opening Width-Depth	Duct Size Width-Depth
10" x 10"	12" x 8"
10" x 12"	14" x 8"
10" x 13"	16" x 8"
10" x 14"	18" x 8"
10" x 16"	20" x 8"
10" x 17"	22" x 8"
10" x 18"	24" x 8"
14" x 15"	26" x 8"
14" x 16"	28" x 8"
14" x 18"	30" x 8"

Additional sizes available on request. Carton quantity not applicable. Available in Insulated and in Special Sizes & Gauges (No. 1203L/R are non-stock items. See Price List.



**No. 1210**  
**Duct Head**  
(End Cap)

**No. 1200**  
**Duct Take-Off Collar**  
3" Long



**No. 1202**  
**Offset Take-Off Collar**  
7" Long - 2" Rise

**Note:** Also available in 10" & 12" Depths

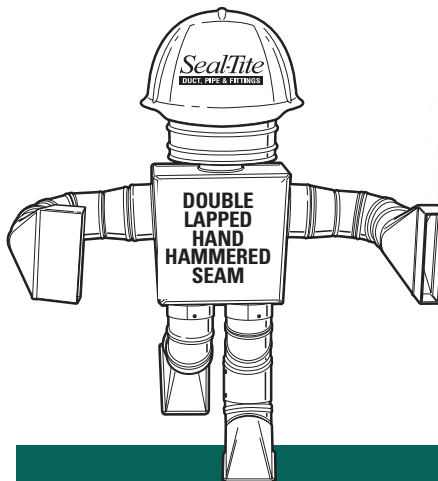
**Seal-Tite 1202 & 1203 Take-Off Collars are designed to give maximum air delivery.**

1. Approximately 3½ times more efficient than straight tap in or straight collar.
2. Two inch rise permitting space between top of plenum and floor joist above.
3. Notched dovetail cuts installation time by approximately one-third.
4. Full corners and double lapped hand-hammered seam construction minimize noise, eliminate leakage and provide excellent rigidity and durability.
5. Seal-Tite take-off completely covers tap-in hole.

**1200, 1202 & 1210 Size**

8" x 8"
10" x 8"
12" x 8"
14" x 8"
16" x 8"
18" x 8"
20" x 8"
22" x 8"
24" x 8"
26" x 8"
28" x 8"
30" x 8"
32" x 8"
34" x 8"
36" x 8"

Available in Insulated and in Special Sizes & Gauges - See Price List.



## AIR FILTER FRAMES



**No. 250 (above)**  
**Without Dovetail**  
(Economy)

**243-251-254 Size**

14" x 20"
14" x 25"
16" x 20"
16" x 25"
20" x 25"
20" x 20"
20" x 25"

**No. 251**  
**Dove tail**  
One Sides

**No. 252**  
**Dovetail**  
Both Sides

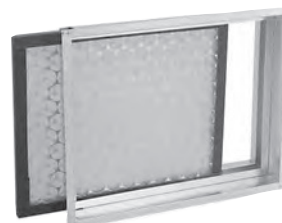


**No. 243**  
**High Efficiency Filter Frame w/Hinged Door**  
Accepts 1" - 4" Filters  
\*Frame is 7" Wide\*

**No. 254**  
**Premium 1" Filter Frame w/Hinged Door**  
\*Frame is 3" Wide\*



**No. 253**  
**Screw-In Style Filter Frame**  
(Screws into Side of Plenum)



**No. 249**  
**Filter Frame**  
(Premium Slide-In)

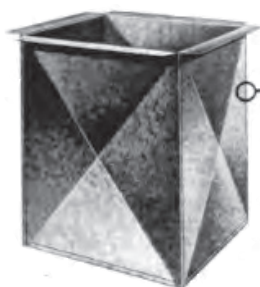
**249 Size**

16 1/8" x 20 1/8"
20 1/8" x 20 1/8"
16 1/8" x 25 1/8"
20 1/8" x 25 1/8"
14 1/8" x 20 1/8"
14 1/8" x 25 1/8"

*Seal-Tite®*

## PLENUM CHAMBERS

INDIVIDUALLY  
CARTONED,  
SHIPPED K.D.



**No. 80  
Down-Flow Plenum**  
Sliding edge seam with  
flanged construction.



Sliding Edge



**No. 81 Plenum**  
Made to fit flange dimensions on  
unit with "S" hooks inside. Sliding  
edge seam construction.

**No. 82 Plenum**  
"ADJUSTABLE",  
can be trimmed down to  
fit flange on unit.



Adjustable  
Male Edge



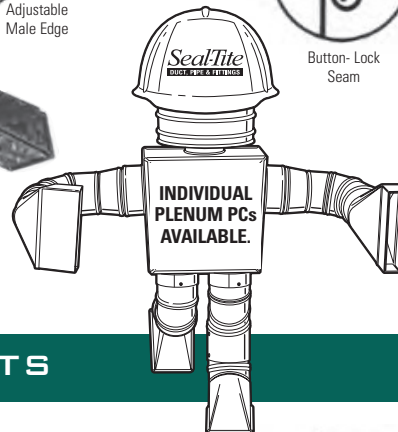
**No. 94 Plenum**  
Button-Lock Seam  
and Set-In Cap



Button-Lock  
Seam



**No. 212  
Plenum Corners**  
Priced per 60" lengths



## RETURN AIR PRODUCTS

### RETURN AIR DROP CONNECTORS

**No. 248F**  
Return Air Connector  
w/Dovetail  
(shown as 248SF  
20" x 14" to 20" x 8")



**No. 248HD**  
\* Top Hinged Filter Door

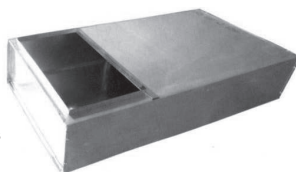
**No. 055**  
Angled Return Air Boot (Larger Tonnage)  
Accepts 1"-5" Filter

Boots Available In  
Multiple Sizes



**No. WK**  
Support Box  
WK 30 & 38

Available in  
Multiple Sizes



### No. 92 LOW PROFILE FURNACE RETURN SUPPORT BOX

Return Air Boxes manufactured from 22 and 24 ga. galvanized steel. Bottom panel constructed from 24 ga. material. Sides from 22 ga. material. Set in tops and bottoms ordered 1/4" larger than bottom of unit. Shipped K.D.

**Model. WKF**  
\*With Side  
Filter Rack

**No. 92**  
Low Profile  
Furnace  
Return Air  
Support  
Box



Available in a variety of sizes.

### No. 81100 RETURN AIR PACKAGE

Complete package consisting of:  
1 – 1200 Starting Collar  
2 – 32" Duct Sections B/L  
1 – 248 Connector with Filter  
6 – 213 Drive Straps  
Shipped K.D.

Duct Size	Collar (Filter Size)
*20" x 10"	20" x 14"
*20" x 10"	20" x 16"
*25" x 10"	23" x 14"
*25" x 10"	25" x 14"
*25" x 10"	25" x 16"

Top filter opening standard.  
\*Add "S" for side filter access.  
\*Add "F" for filter included.



**No. 81100**  
Return Air  
Package

**No. 81100SF**  
Side Filter  
Return Air  
Package

SealTite®



## WALL STACK

### SNAP-LOCK WALL STACK

One Piece 12" & 24" Sections  
Available only in Snap-Lock.  
Other sizes available as  
factory specials.



12" Section

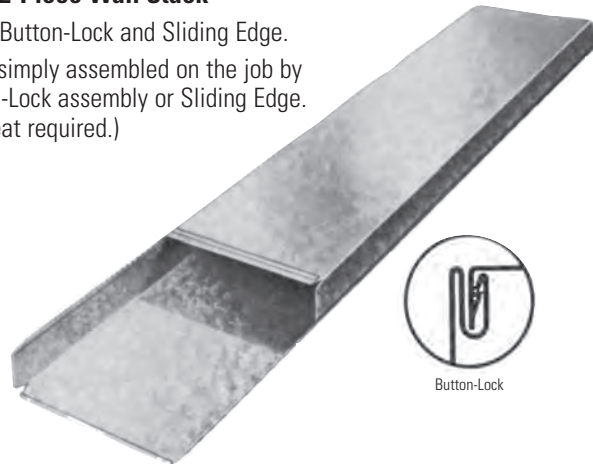
24" Section

### 60" & 100" 2-Piece Wall Stack

Available in Button-Lock and Sliding Edge.  
Quickly and simply assembled on the job by  
using Button-Lock assembly or Sliding Edge.  
(No drive cleat required.)

#### 6"-100" Dimensions

2 1/4" x 10"
2 1/4" x 12"
2 1/4" x 14"
3 1/4" x 10"
3 1/4" x 12"
3 1/4" x 14"



Button-Lock

## STACK ANGLES & ELBOWS



No. 1240-S  
Elbow



No. 1241-S  
Angle



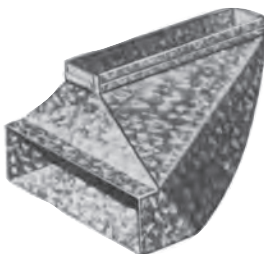
No. 1245-S  
Angle



No. 1246-S  
Elbow

#### Stack Angle Dimensions

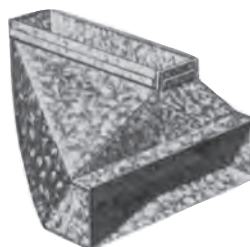
2 1/4" x 10"
2 1/4" x 12"
2 1/4" x 14"
3 1/4" x 10"
3 1/4" x 12"
3 1/4" x 14"



No. 1259  
Left Reverse Elbow  
(5 3/4")\*



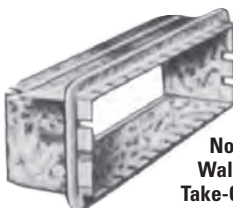
No. 1253  
Center Reverse Elbow  
(5 3/4")\*



No. 1258  
Right Reverse Elbow  
(5 3/4")\*

Dimensions	AVAILABILITY		
	1210 & 1200	1250	1259, 1253 & 1258
2 1/4" x 10"	✓	✓	✓
2 1/4" x 12"	✓		
2 1/4" x 14"	✓		
3 1/4" x 10"	✓	✓	✓
3 1/4" x 12"	✓	✓	✓
3 1/4" x 14"	✓		✓

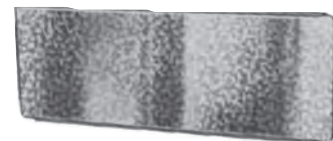
PLEASE SPECIFY PART NUMBER WHEN ORDERING.  
\*Overall Depth – Deduct 1" for Installed Depth.



No. 1200  
Wall Stack  
Take-Off Collar



No. 1250  
Stack Adapter  
3 1/4" x 10" to 2 1/4" x 12"  
3 1/4" x 12" to 2 1/4" x 14"

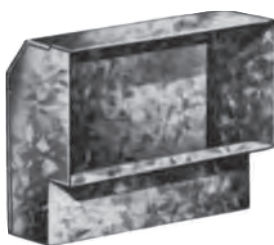


No. 1210  
Wall Stack Cap

SealTite®

CELEBRATING OVER 119 YEARS OF QUALITY HVAC SHEET METAL

## STACK HEADS



**No. 1230**  
**Stack Head**  
3" Throat, 2" Flange



**No. 1230LE**  
**Stack Head with Plate**

### AVAILABILITY

Stack Dimension	Register Size	1230	1230LE
2 1/4" x 10"	6" x 10"	✓	✓
2 1/4" x 12"	6" x 12"	✓	✓
2 1/4" x 14"	6" x 14"	✓	✓
3 1/4" x 10"	4" x 10"	✓	✓
3 1/4" x 10"	6" x 10"	✓	✓
3 1/4" x 12"	4" x 12"	✓	✓
3 1/4" x 12"	6" x 12"	✓	✓
3 1/4" x 14"	4" x 14"	✓	✓
3 1/4" x 14"	6" x 14"	✓	✓



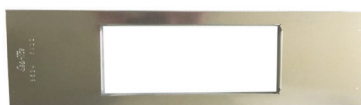
**No. 1232**  
**Double Stack Head**  
3" Throat



**No. 1234**  
**Stack Head**  
7 1/4" Deep

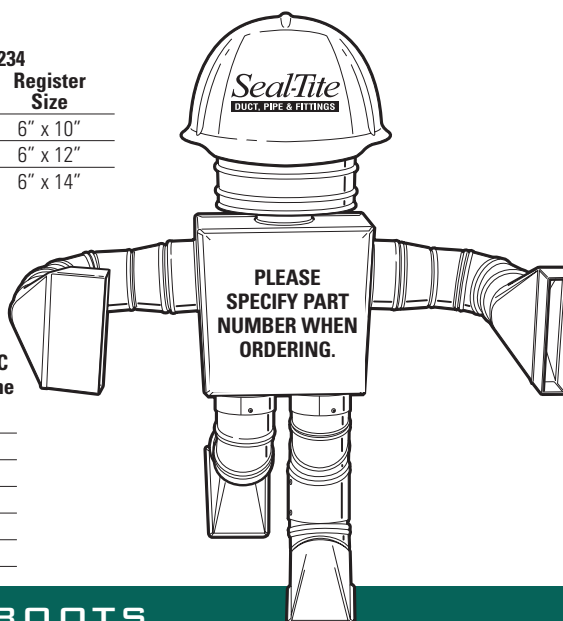
Stack Dimension	Register Size
3 1/4" x 10"	6" x 10"
3 1/4" x 12"	6" x 12"
3 1/4" x 14"	6" x 14"

**No. 3517**  
**Cold Air Frame**  
16" On Center



**No. 31 & 31HC**  
**Dry Wall Frame**

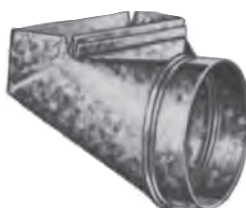
6" x 8"
6" x 10"
6" x 12"
6" x 14"
6" x 24"
6" x 30"



## WALL STACK BOOTS



**No. 1214**  
**Universal Boot**



**No. 1218**  
**Elbow Boot**  
90°



**No. 1219-L**  
**Left End Boot**



**No. 1219**  
**Center End Boot**



**No. 1219-R**  
**Right End Boot**

Stack Dimension	Collar Size
2 1/4" x 10"	5" & 6"
2 1/4" x 12"	5" & 6"
2 1/4" x 14"	6"
3 1/4" x 8"	5" & 6"
3 1/4" x 10"	4", 5" & 6"
3 1/4" x 10"	7"
3 1/4" x 10"	8"
3 1/4" x 12"	6"
3 1/4" x 12"	7" & 8"
3 1/4" x 14"	6" & 7"
3 1/4" x 14"	8"

*SealTite®*

CELEBRATING OVER 119 YEARS OF QUALITY HVAC SHEET METAL

## OVAL PIPE & FITTINGS



**No. 4245**  
**Round-to-Oval**  
**Angle Boot**

**No. 4245NC**  
**No Crimp**

**4245**  
**Size**  
5" – 8"



**No. 4060**  
**Oval Pipe**  
60" Length  
6", 7", 8"

**Oval Pipe**  
**No. 4100, 4113, and 4120**  
5, 6", 7", 8"

Lengths:

100", 113", & 120"

Also Available in Rack Quantities

For other sizes contact factory.

## ADAPTERS... EXCLUSIVELY FROM SEAL-TITE



**No. 4212**  
**Oval Boot Adapter**  
5" & 8" Oval

**4212**  
**Dimensions**

2 1/4" x 10"
2 1/4" x 12"
2 1/4" x 14"
3 1/4" x 8"
3 1/4" x 10"
3 1/4" x 12"
3 1/4" x 14"



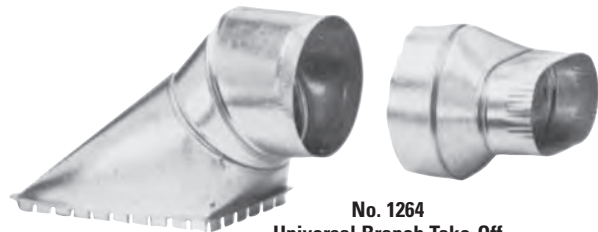
**No. 1218**  
**Elbow Boot**  
with No. 4212 Adapter

### CONVERTS WALL STACK BOOTS TO OVAL

**No. 4213**  
**Straight**  
**Round-to-Oval Adapter**

**4213**  
**Size**

7" – 7"
6" – 6"
7" – 6"



**No. 1264**  
**Universal Branch Take-Off**  
with No. 4213 Adapter

*Seal-Tite®*

CELEBRATING OVER 119 YEARS OF QUALITY HVAC SHEET METAL

## OVAL FITTINGS

### OVAL TOP & SIDE TAKE-OFFS



**No. 4261**  
Oval Top  
Take-Off

4261 Size
6" x 10" - 6"
6" x 12" - 7"



**No. 4265**  
Oval Side  
Take-Off

4265 Size
6" x 6" - 6"
7" x 7" - 7"

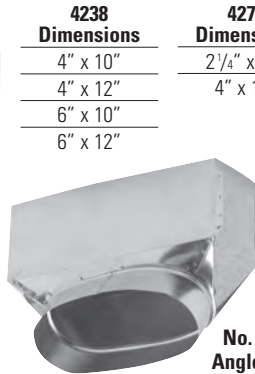
### OVAL STACKHEADS & REGISTER BOXES

6", 7", 8" Oval



**No. 4238**  
Oval Stackhead  
2 3/4" Depth  
3 3/4" Depth

Available with 9" long collar



**No. 4270**  
Angle Oval  
Register Box



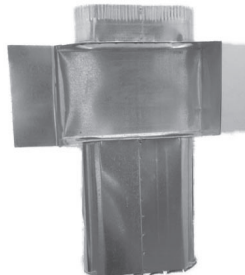
**No. 4271**  
Oval Register Box

4238 Dimensions	4270 Dimensions	4271 Dimensions
4" x 10"	2 1/4" x 12"	2 1/4" x 12"
4" x 12"	4" x 10"	4" x 10"
6" x 10"		4" x 12"
6" x 12"		



**No. 4235**  
Square Oval  
Stackhead  
3 1/4" Depth

**No. 4236**  
Square Oval  
Stackhead  
W, Top outlet  
3 1/4" Depth



### OVAL REGISTER BOOTS

6", 7", 8" Oval

**No. 4272**  
Straight Oval  
Register Boot



**No. 4273**  
End Oval  
Register Boot



**No. 4274**  
Oval 90° Register Boot



4272, 4273 & 4274 Dimensions
2 1/4" x 10"
2 1/4" x 12"
2 1/4" x 14"
4" x 10"
4" x 12"

### OVAL BOOTS

6", 7, 8" Oval

**No. 4244**  
Round-to-Oval Boot



**No. 4244NC**  
Round-to-Oval Boot  
w/No Crimp

**No. 4246**  
Oval Reverse  
Boot



**No. 4246NC**  
No Crimp



**No. 4247**  
Round-to-Oval  
End Boot

**No. 4247NC**  
No Crimp

**No. 4248**  
Offset  
Round-to-Oval  
Adapter



**No. 4248NC**  
No Crimp

### OVAL ELBOWS/ANGLES

6", 7", 8"



**No. 4140**  
Vertical Oval Elbow



**No. 4141**  
Vertical Oval Angle



**No. 4130**  
Horizontal Oval Elbow



**No. 4131**  
Horizontal Oval Angle

*SealTite®*

CELEBRATING OVER 119 YEARS OF QUALITY HVAC SHEET METAL



# DUCT BOARD FITTINGS

## TAKE-OFFS & COLLARS

No. 1660-S  
Duct Board Cone  
w/ 4 1/2" SE Segment &  
Tabs

1660-S, 1560-S  
& 1760-S  
Size

5" - 4"
6" - 5"
7" - 6"
8" - 7"
9" - 8"



No. 1760-S  
Duct Board Cone  
w/ 4 1/2" SE Segment,  
Damper & Tabs

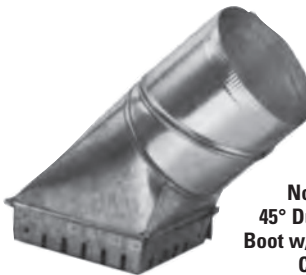
Flex Retention  
Tabs

No. 1560-S  
Duct Board  
Cone



No. 696U  
90° Duct Board  
Boot w/Straight  
Collar

696U, 697U & 698U Take-Off Opening	Collar Size
6" x 7"	4"
6" x 7"	5"
6" x 7"	6"
6" x 7"	7"
6" x 7"	8"
6" x 8"	4"
6" x 8"	5"
6" x 8"	6"
6" x 8"	7"
6" x 8"	8"

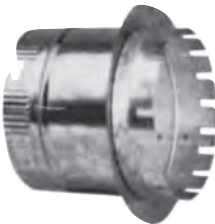


No. 697U  
45° Duct Board  
Boot w/Adjustable  
Collar

1727, 1728  
& 1729  
Size

4"
5"
6"
7"
8"
9"
10"
12"
14"
16"

No. 1728  
Duct Board  
Collar w/  
Damper & Tabs

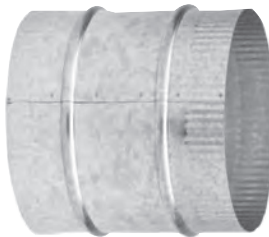


No. 1727 1" - 1 1/2"  
Duct Board  
Collar

No. 1727-2"  
For 2" DB



No. 1729  
Duct Board Collar w/  
Damper, Tabs & Scoop



No. 800  
Flex Duct  
Conductor  
4" - 16"

## TWIST TYPE TAKE-OFF CONNECTORS FOR DUCT BOARD

SEAL-TITE RECOMMENDED  
FITTING FOR EFFICIENT AIR  
DELIVERY

No. 1564  
Duct Board  
Seal-Tite® Take-Off



1564  
Size

4 1/2" x 9" - 5"
6" x 10" - 6"
6" x 12" - 7"
6" x 14" - 8"

502, 503, 505,  
506 & 508  
Size

5"
6"
7"
8"
9"
10"
12"
14"
16"



No. 502-WB-C2



No. 503-WB-C3



No. 505-WB-EL



No. 506-WB-D



No. 508-WB-DEL

Seal-Tite®

## TWIST TYPE TAKE-OFF CONNECTORS FOR SHEET METAL

176, 605, 604,  
606, 607, 608,  
601, 602, 603,  
301, 302, 303,  
304, 305, 306,  
315, 325 & 335

Size

4"

5"

6"

7"

8"

9"

10"

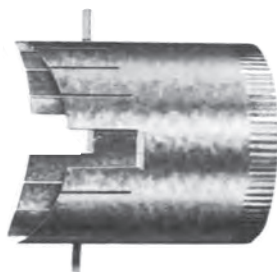
12"

14"

16"

18"

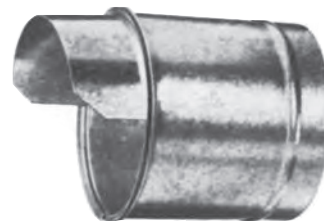
20"



**No. 176  
Take-Off Collars**  
For Insulated Rigid Round Pipe.  
(Specify Round Run Dimension.)



**No. 605-WG-EL**



**No. 604-WG-E**



**No. 606-WG-D**



**No. 607-WG-DE**



**No. 608-WG-DEL**



**No. 601-WG-C1**



**No. 602-WG-C2**



**No. 603-WG-C3**



**No. 179  
Stick-On Take-Off Collar  
w/Tabs**

**179 & 181  
Size  
5" - 8"**



**No. 181  
Stick-On Take-Off Collar  
w/Tabs & Damper**



**No. 302  
Stick-On w/Damper**

**No. 301  
Stick-On Take Off**

**No. 303  
Stick-On w/Scoop**

**No. 304  
Stick-On w/Scoop &  
Damper**

**No. 306  
Stick-On Elbow**



**No. 305  
Stick-On Saddle**

**No. 315  
Stick-On Saddle w/Damper**

**No. 325  
Stick-On Saddle w/Scoop**

**No. 335  
Stick-On Saddle w/Scoop & Damper**

*SealTite®*

CELEBRATING OVER 119 YEARS OF QUALITY HVAC SHEET METAL

## ROUND PIPE ACCESSORIES

### REDUCERS/INCREASERS



**No. 131**  
Taper Increaser

Specify  
No. 133  
for  
No Crimp



**No. 132**  
Taper Reducer



**No. 231**  
Short Increaser

Specify No. 233  
for No Crimp



**No. 232**  
Short Reducer



**No. 171**  
Stub Collar  
(No Crimp)



**No. 172**  
Top Collar  
(Crimp)



**No. 1716**  
6" Long Top  
Collar



**No. 151**  
Boot Cap w/Crimp  
(shown)



**No. 152**  
Boot Cap/  
No Crimp

#### 131, 132, 231 & 232 Size

4" - 3"
5" - 4"
5" - 3"
6" - 5"
6" - 4"
6" - 3"
7" - 6"
7" - 5"
7" - 4"
8" - 7"
8" - 6"
9" - 8"
9" - 7"
9" - 6"
10" - 9"
10" - 8"
10" - 7"
10" - 6"
12" - 10"
12" - 8"
12" - 7"
14" - 12"
16" - 12"
16" - 14"

#### 171, 172, 151, 152, 180-1, 180, 173 & 175 Size

3" - 24"

### CONNECTORS DRAW BANDS



**No. 162**  
Snap Type Pipe  
Connector  
4" - 8"

**No. 167**  
Draw Band  
Bolt Type  
26 GA.  
4" - 16"



**No. 162 HC**  
Hose Clamp  
Connector  
4" - 8"

### COLLARS

**No. 1724**  
4" Long Top  
Collar with  
Crimp & Bead

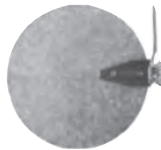


#### 1716, 1724, 1726 & 1732 Size

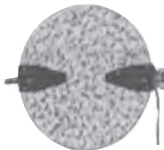
3" - 18"



**No. 1732**  
Damper Collar  
w/Scoop



**No. 180-1**  
Single Quad  
Damper Complete  
w/Bearings



**No. 180**  
Double Quad  
Damper



**No. 173**  
Damper Collar



**No. 174**  
Balancing  
Damper



**No. 175**  
Damper Section  
7" Long



**No. 1726**  
6" Long Top  
Collar w/Tabs, Crimp & Bead



**No. 220**  
Flue Thimble  
4" - 12"



**No. 2223**  
Fresh Air Intake  
(screened)  
4" - 12"

**No. 2223D**  
With  
Damper  
\*Recommended for  
Dryer Vent



**No. 154**  
Shanty Cap  
3" - 16"

**No. 184**  
Vent Cap w/  
Wind Band  
3" - 12"



#### 1463-9 & 1463-14 Size

4 1/2" x 9" - 5"
6" x 10" - 6"
6" x 12" - 7"
6" x 14" - 8"
6" x 16" - 9"
7" x 16" - 10"

**No. 1463-9**  
Fits 8", 9" & 10" Pipe

**No. 1463-14**  
Fits 12", 14" & 16"  
Pipe

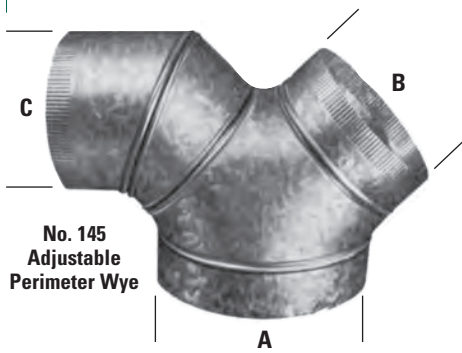


**No. 222**  
Storm Collar  
3" - 12"

*Seal-Tite®*



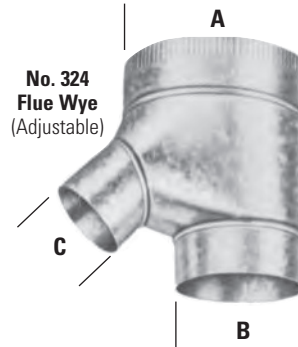
## ROUND PIPE ACCESSORIES



**No. 145  
Adjustable  
Perimeter Wye**

**145 & 146  
Sizes for  
A x B x C**

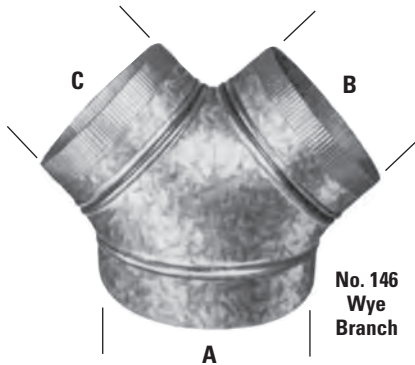
6" x 5" x 5"
7" x 5" x 5"
7" x 6" x 5"
7" x 7" x 5"
8" x 6" x 6"
8" x 7" x 5"
9" x 7" x 7"
9" x 8" x 6"
10" x 7" x 7"
10" x 7" x 6"
10" x 8" x 8"
12" x 10" x 10"



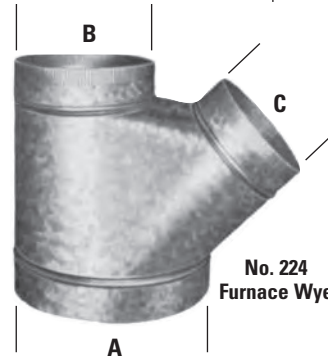
**No. 324  
Flue Wye  
(Adjustable)**

**324  
Sizes for  
A x B x C**

5" x 4" x 3"
5" x 5" x 3"
6" x 4" x 3"
6" x 5" x 3"
6" x 6" x 3"
7" x 5" x 3"
7" x 6" x 3"
6" x 4" x 4"
6" x 5" x 4"
6" x 6" x 6"
7" x 6" x 4"

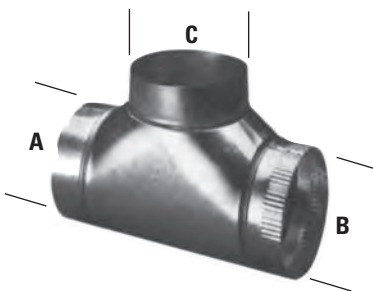


**No. 146  
Wye  
Branch**



**No. 224  
Furnace Wye**

Non AGA Approved Draft Diverters



**No. 217  
(Crimp on the run)**

**No. 218  
Tee Joint  
(Crimp)**

**No. 219  
(No Crimp)**

**217, 218 & 219  
Sizes for  
A x B x C**

3" x 3" x 3"
4" x 4" x 4"
5" x 5" x 5"
6" x 6" x 6"
7" x 7" x 7"
8" x 8" x 8"
9" x 9" x 9"
10" x 10" x 10"
12" x 12" x 12"
14" x 14" x 14"

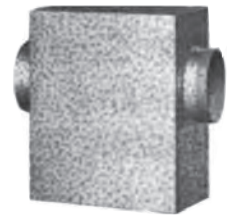


**No. 153  
Tee Joint Cap  
3" - 12"**

**224  
Sizes for  
A x B x C**

Length
8" x 6" x 6"
9" x 7" x 7"
10" x 8" x 8"
12" x 10" x 7"
12" x 10" x 8"
12" x 10" x 10"
12" x 12" x 8"
14" x 9" x 9"
14" x 10" x 10"
14" x 12" x 8"
14" x 12" x 12"
16" x 12" x 8"
16" x 12" x 9"
16" x 12" x 10"
16" x 12" x 12"

**No. 123-H-V  
Horizontal-Vertical**



**No. 121  
Horizontal**

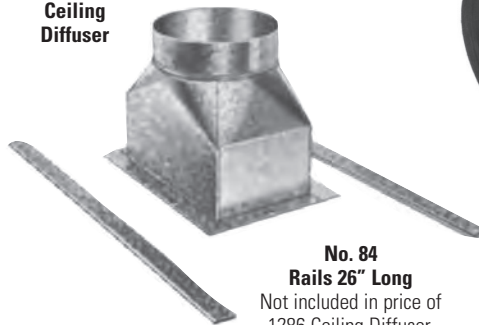
**120, 121 & 123  
Size  
3" - 8"**

**No. 120  
Vertical**

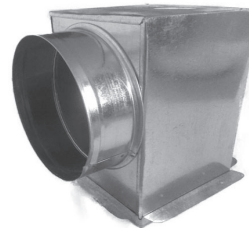


Register Size	Pipe Size
4" x 8"	5"
4" x 8"	6"
4" x 10"	5"
4" x 10"	6"
6" x 6"	6"
6" x 10"	6"
6" x 12"	6"
6" x 12"	7"
6" x 14"	8"
8" x 8"	8"
8" x 10"	8"
8" x 12"	8"
12" x 12"	9"

**No. 1286  
Ceiling  
Diffuser**



**No. 84  
Rails 26" Long**  
Not included in price of  
1286 Ceiling Diffuser.



**No. 2172PG  
Ceiling Register  
Box**

**2172PG & 1075  
Size**

6" x 6" - 6"
8" x 8" - 6"
8" x 8" - 7"
8" x 8" - 8"
10" x 10" - 8"

Also Available Insulated:  
No. 3172 (Side)  
No. 3172B (Top)

**No. 1075  
Ceiling Register  
Box**



*SealTite®*

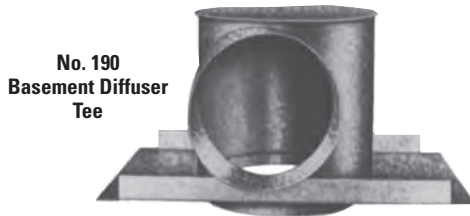
CELEBRATING OVER 119 YEARS OF QUALITY HVAC SHEET METAL



## ROUND PIPE ACCESSORIES



**No. 1280  
Ceiling Box  
Less Damper  
& Chain**



**No. 190  
Basement Diffuser  
Tee**



**No. 191  
Diffuser Tee**

Pipe Size	AVAILABILITY		
	1280	190	191
6" – 6"	✓	✓	✓
6" – 8"	✓	✓	✓
7" – 8"	✓	✓	✓
8" – 8"	✓	✓	✓
7" – 10"		✓	✓
8" – 10"	✓	✓	✓
8" – 12"			✓

<sup>5</sup>/<sub>8</sub>" Plaster Ground supplied on Ceiling Diffusers.  
Can be supplied with <sup>3</sup>/<sub>8</sub>" if specified.

## G500 SERIES SEAL-FLEX SLEEVE & ACCESSORIES

Seal-Tite Seal-Flex Sleeve insulates galvanized pipe and provides more air delivery than "flex" pipe.  
(8" – Galvanized vs. Flex, approximately 35% more efficient)  
Available in 4" – 18" sizes.

### Description/Applications

Seal-Flex Sleeve G500 is a U.L. listed insulation for round metal pipe. The scuff resistant grey polyethylene jacket provides an exterior vapor barrier and the 1" fiberglass insulation combines to provide fast economical jobsite installation. Just slip seal-flex sleeve over the galvanized pipe.

G500 has a composite U.L. fire hazard classification of less than 25 flame spread and 50 smoke developed, and has a Pipe and Equipment Covering listing.

### Performance Features/Benefits

- U.L. Listed Pipe and Equipment Covering. Less than 25 flame spread, 50 smoke developed.
- Standard 1" thick fiberglass insulation.  
"K" .28 BTU/hr./sf. at 75° mean  
"R" 3.75
- Extra thickness of fiberglass insulation available on request.  
"C" .187 BTU/hr./sf. at 75° mean  
"R" 5.357
- Scuff resistant grey polyethylene vapor barrier. Jacket Water Vapor Transmission Rating .10 perms.
- Full range of sheet metal diameters available. (4" – 18" sizes)
- Eliminates need for handling and fabricating bulky duct wrap, for round pipe on jobsite.
- Easy diameter identification. Each piece is marked with size on closure tape.
- Packaged efficiently for easy warehousing, shipping and jobsite handling.
- Starter cone No. 274 makes sliding Seal-Flex sleeve over pipe a snap. Draw band clamp No. 700 assures sleeve stays in place.



## ACCESSORIES



**No. 700  
Draw Band Type  
Clamp**



**No. 274  
Starter Cones**

Permanent Galvanize Metal for durability and ease of assembly. Just fit on end of pipe & slide Seal-Flex over the top.

*Seal-Tite®*

## SPECIALTY PRODUCT

### DRYER BOX



Model 350  
22 GAUGE ALUMINIZED STEEL  
TOP PORT MEASURES 4 15/16" x 3 5/32" OVAL SHAPE  
DISTANCE FROM NAILING FLANGE TO REAR OF BOX IS 3 1/2"  
OVERALL MEASUREMENTS: 21" H x 12 1/2" W x 4 3/8" D  
INSIDE MEASURES 9 1/2" WIDE x 18 1/4" TALL



Model 425  
22 GAUGE ALUMINIZED STEEL  
TOP PORT MEASURES 4 1/8" WITH VERY SLIGHT OVAL SHAPE  
DISTANCE FROM NAILING FLANGE TO REAR OF BOX IS 4 1/4"  
OVERALL MEASUREMENTS: 21" H x 12 1/2" W x 5 1/8" D  
INSIDE MEASURES 9 1/2" WIDE x 18 1/4" TALL

- 22 gauge aluminized steel weighing 4.03 pounds each
- Top port measures 4 15/16" x 3 5/32" oval shape
- Distance from nailing flange to rear of box is 3 1/2"
- Overall measurements: 21" h x 12 1/2" w x 4 3/8" deep
- Inside measures 9 1/2" wide x 18 1/4" tall

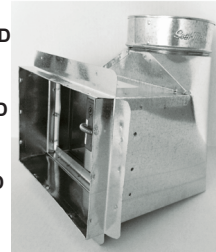
- 22 gauge aluminized steel weighing 4.14 pounds each
- Top port measures 4 1/8" with very slight oval shape
- Distance from nailing flange to rear of box is 4 1/4"
- Overall measurements: 21" h x 12 1/2" w x 5 1/8" deep
- Inside measures 9 1/2" wide x 18 1/4" tall

### CRD BOOTS

No. 1470 D  
Str. Bt.

No. 1473 D  
End Bt.

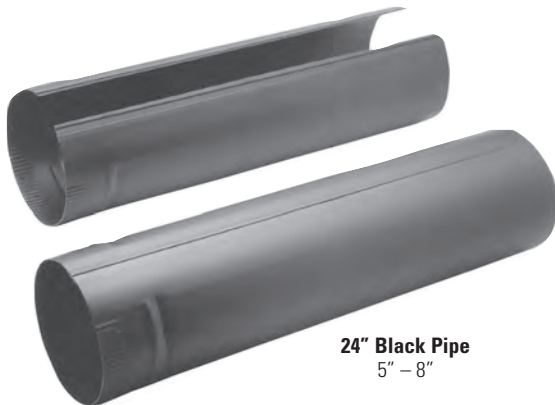
No. 1474 D  
90° Bt.



- Available Boot Styles: 90° or "L" Boot, Straight Boot, and End Boot
- Standard Fusible Link - 165° F
- (Optional 212° F)
- 22 Ga CRD Frame And Blades
- Available In Range Of Sizes From 4" x 6" x 4" to 14" x 14" x 10"

## BLACK PIPE & FITTINGS

### STOVE PIPE ELBOWS & ACCESSORIES



24" Black Pipe  
5" - 8"



Black Elbow  
5" - 8"

Taper Reducer  
6" - 5"  
7" - 6"  
8" - 6"  
8" - 7"



Boot Cap  
5" - 8"

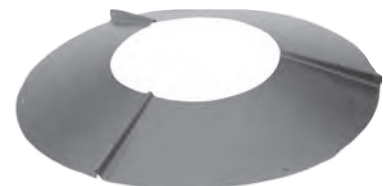
No. 4248  
Round-to-Oval  
Adapter  
6" - 6"  
7" - 6"  
7" - 7"



Tee Joint  
5" x 5" x 5"  
6" x 6" x 6"  
7" x 7" x 7"  
8" x 8" x 8"

See No. 217, 218  
& 219 for style.

Telescopic Pipe  
5" - 8"



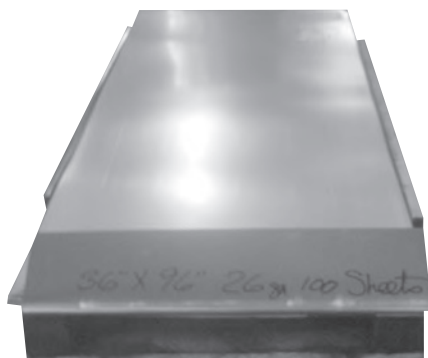
Trim Collar  
5" - 8"

SealTite®

CELEBRATING OVER 119 YEARS OF QUALITY HVAC SHEET METAL

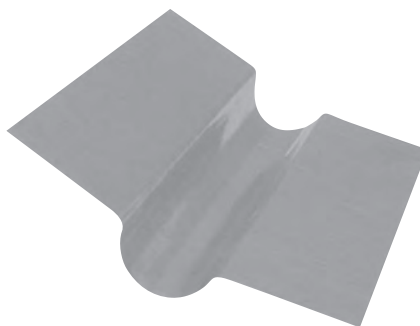
## SKID SHEET STEEL

## HEAT TRANSFER PLATES



**36" X 96" 28 GA., 26 GA.**  
Packed 100 per skid

**48" X 120" 28 GA., 26 GA.**  
Packed 50 per skid



**For Installing Tubing to Sub Floor**  
For Radiant Floor Heating

**No. 336**  
36" Long

**No. 348**  
48" Long

**36" or 48" Length**  
Install with Zip Screws  
50 Pieces per Bundle

## MOBILE & MODULAR HOME APPLICATIONS



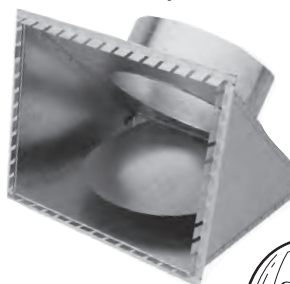
**No. 146 – WYE**

**No. 146**  
**WYE**  
**Size**

14" – 12" x 12"
12" – 10" x 10"
12" – 12" x 12"

All fittings available individually.  
Call Customer Service for pricing.

**No. 201**  
**Duct Tap-In Fitting**  
**w/Damper**

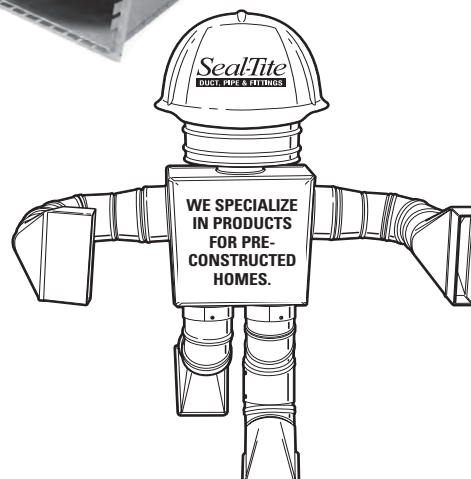


<b>No. 201</b> <b>Duct Tap-In Fitting w/Damper</b>		
<b>Opening Size</b>	<b>Depth Size</b>	<b>Collar Size</b>
11" x 12"	14"	10"
14" x 12"	14"	10" & 12"
15" x 14"	14"	14"



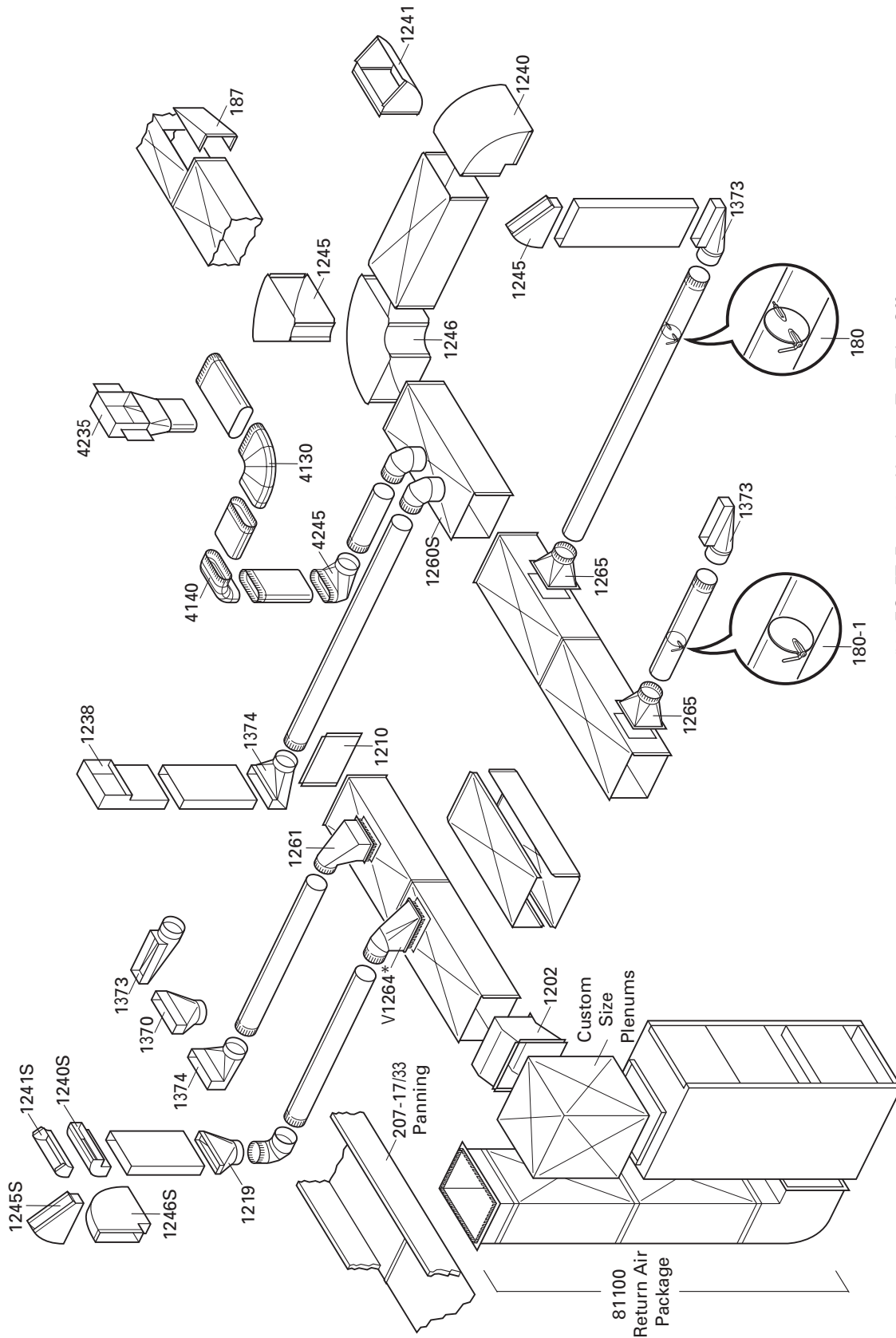
**No. 200**  
**Filter Register**  
**Box**

<b>No. 200</b> <b>Filter/Register Box</b>	
<b>Box Size</b>	<b>Collar Size</b>
20" x 12" x 14"	12"
20" x 14" x 14"	14"
14" x 14" x 12"	12"



*Seal-Tite®*

## EXTENDED PLENUM SYSTEM



\*30 EQ. FT. For 1264 Used as Top Take-Off  
20 EQ. FT. For 1264 Used as Side Take-Off

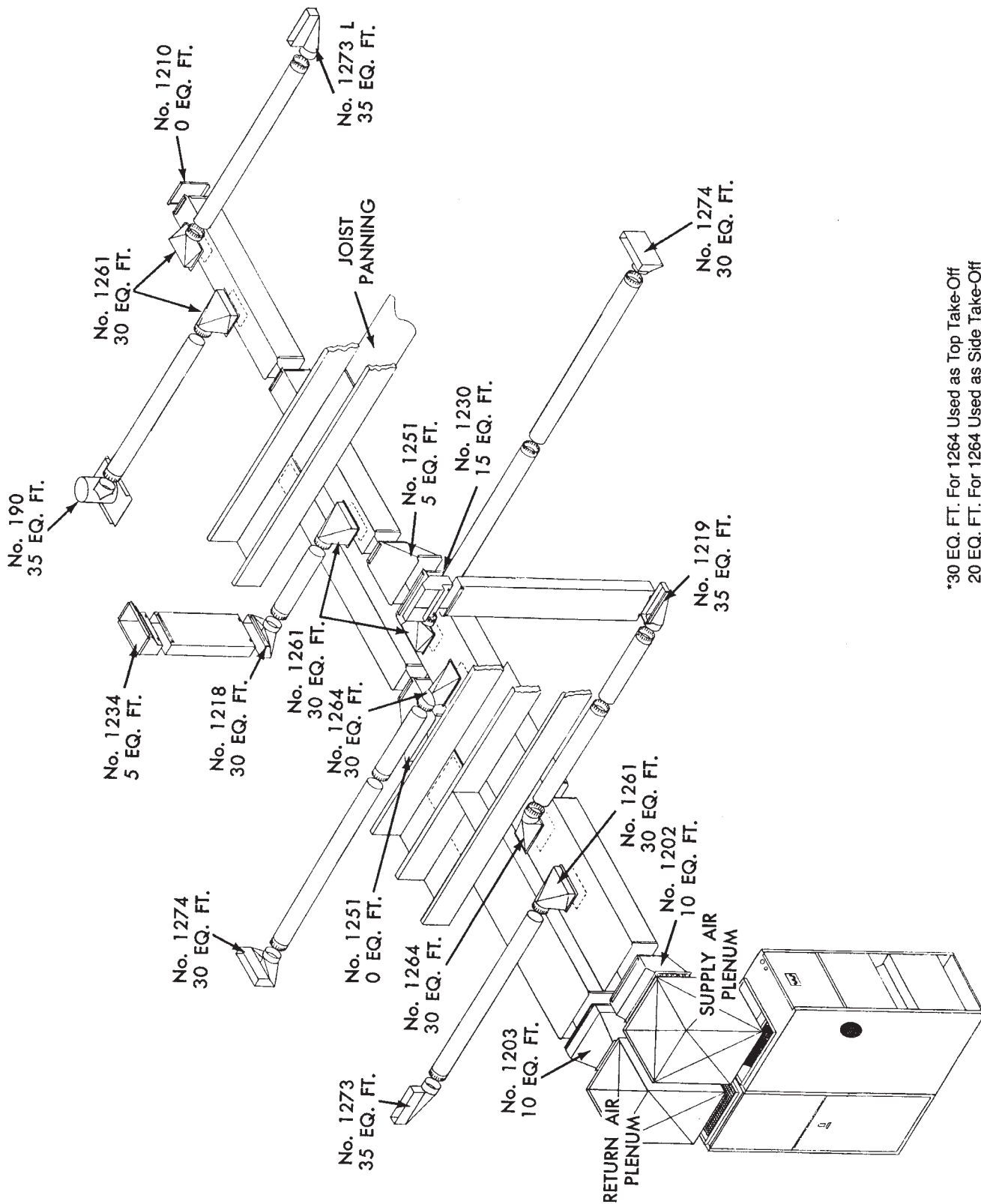
Seal-Tite duct, pipe, & fittings are designed for optimum air flow throughout the comfort zone.

*Seal-Tite®*

CELEBRATING OVER 119 YEARS OF QUALITY HVAC SHEET METAL



## REDUCTION SYSTEM



\*30 EQ. FT. For 1264 Used as Top Take-Off  
20 EQ. FT. For 1264 Used as Side Take-Off

Seal-Tite duct, pipe, & fittings are designed for optimum air flow throughout the comfort zone.

Seal-Tite®

## FRACTIONS & DECIMAL EQUIVALENTS

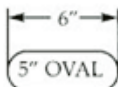
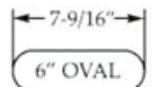
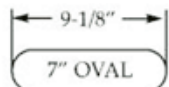
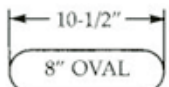
Fractions	Decimal Equivalent Inches	Fractions	Decimal Equivalent Inches	Fractions	Decimal Equivalent Inches	Fractions	Decimal Equivalent Inches
1/64	.0156	17/64	.2656	33/64	.5156	49/64	.7656
1/32	.0312	9/32	.2812	17/32	.5312	25/32	.7812
3/64	.0469	19/64	.2969	35/64	.5469	51/64	.7969
1/16	.0625	5/16	.3125	9/16	.5625	13/16	.8125
5/64	.0781	21/64	.3281	37/64	.5781	53/64	.8281
3/32	.0937	11/32	.3437	19/32	.5937	27/32	.8437
7/64	.1094	23/64	.3594	39/64	.6094	55/64	.8594
1/8	.1250	3/8	.3750	5/8	.6250	7/8	.8750
9/64	.1406	25/64	.3906	41/64	.6406	57/64	.8906
5/32	.1562	13/32	.4062	21/32	.6562	29/32	.9062
11/64	.1719	27/64	.4219	43/64	.6719	59/64	.9219
3/16	.1875	7/16	.4375	11/16	.6875	15/16	.9375
13/64	.2031	29/64	.4531	45/64	.7031	61/64	.9531
7/32	.2187	15/32	.4687	23/32	.7187	31/32	.9687
15/64	.2344	31/64	.4844	47/64	.7344	63/64	.9844
1/4	.2500	1/2	.5000	3/4	.7500	1.0	1.0000

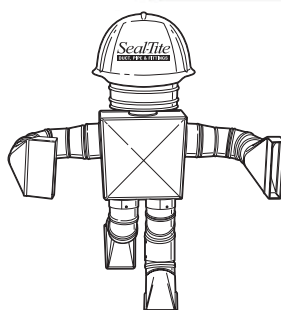
## CFM COMPARISON CHART

### CFM Oval - Round - Stack

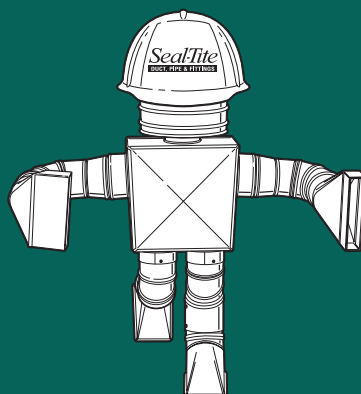
CFM Oval Duct - .1 Static			
Branch Duct	Circumference (Total Inches)	Area Sq Inches	Capacity (CFM) .1 SP
5in Round	15.7	19.6	68
6in Round	18.8	28.3	108
7in Round	22.0	38.5	160
5in Oval	15.7	17.2	60
6in Oval	18.8	22.2	78
7in Oval	22.0	27.3	104
2 1/4 x 10 Stack	24.5	22.5	63
2 1/4 x 12 Stack	28.5	27.0	70
3 1/4 x 10 Stack	26.5	32.5	96
3 1/4 x 12 Stack	30.5	39	120

### WALL STACK VS. OVAL PHYSICAL COMPARISON

 5" OVAL	 6" OVAL	 7" OVAL	 8" OVAL
3-1/4" X 8"	3-1/4" X 10"	3-1/4" X 12"	3-1/4" X 14"



SealTite®



IF IT FITS RIGHT,

LOOKS RIGHT

STAYS RIGHT

AND IS LEAK-TITE –

IT'S SEAL-TITE.

*Seal-Tite*®  
DUCT, PIPE & FITTINGS



*Seal-Tite*®  
DUCT, PIPE & FITTINGS

*America's Premier  
Air Distribution  
Systems*

120 Moore Rd.

Hillsboro, OH 45133

1-800-582-9025

Phone: (937) 393-4268

Fax: (937) 393-1262

Toll Free Fax: 1-800-543-4673

[www.sealtitehvac.com](http://www.sealtitehvac.com)